

A3 Colour Intelligent Devices

RICOH
imagine. change.

RICOH IM C4500(A) IM C5500(A) IM C6000

✔ Printer ✔ Copier ✔ Scanner ✔ fax



Work smarter and more effectively with the IM C4500(A)/C5500(A)/C6000 intelligent devices – new technology that is designed to grow and adapt, just as your business does.

It's time to:

- Work smarter – using integrated workflow scan processes
- Get personal – with easy access to the apps you use most often
- Stay current - add new functions as needed
- Save costs – by reduced energy consumption

Have access to essential feature enhancements and upgrades, whenever you need them. Boost productivity by seamlessly integrating apps from our secure application site to optimise and streamline your workflow. Have confidence that your intelligent devices are ready to meet all your demands now and in the future – using technology that's scalable, secure, sustainable and simple.

Get more from your intelligent device:

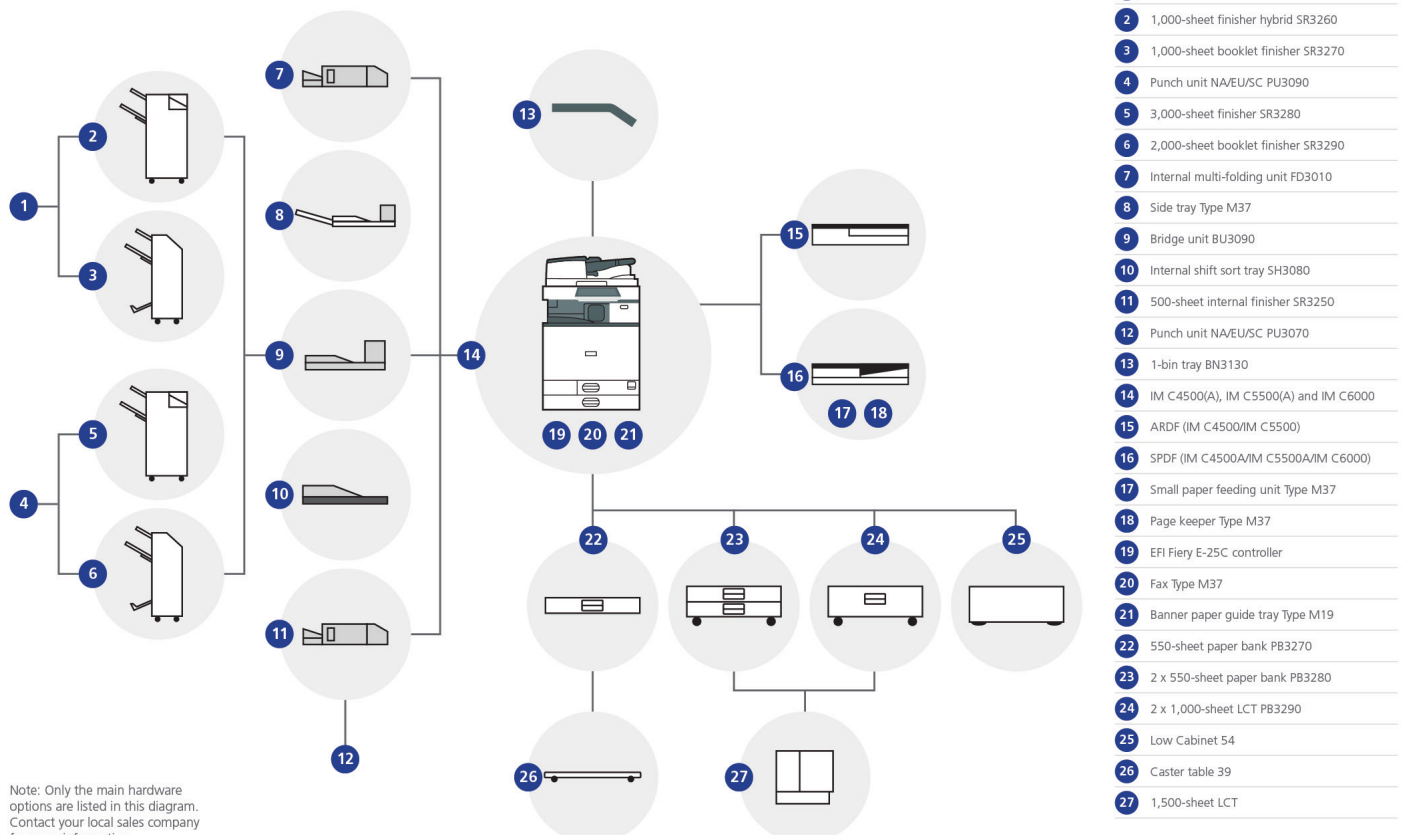
- Save time and streamline workflow – with the right finishing solution for the job
- Scan smaller documents with the small size paper scan unit
- Improved scan accuracy – double feed detection unit
- Enhance print management – with EFI controller

Take advantage of a variety of finishing and paper options to add a professional touch whilst meeting the printing demands of medium to large workgroups. Environmentally-friendly low TEC (Typical Electricity Consumption) values, deliver reduced energy consumption and cut running costs. RICOH Intelligent Support tools ensure your device uptime is maximised whilst self-help tools enable your teams to make simple fixes such as changing supplies, without involving expensive IT-resources.

With print speeds from 45 to 60 CPM, the IM C4500(A)/C5500(A)/C6000 devices are here to add value to your business. The easy-to-use 10.1" Smart Operation Panel with touch screen controls has improved responsiveness and large new look icons. Settings can be configured to suit each individual user's needs and with easier mobile connectivity, users can print or scan to the office network or cloud from their smart device, with built-in support for NFC, AirPrint* or Mopria.

- Production of professional flyers with inner multi-folding unit
- Reduction of outsourcing costs – by producing printed materials in-house
- Efficient working and reduced user intervention – by expanding paper capacity
- Increased uptime and performance – with RICOH Intelligent Support

IM C4500(A) / IM C5500(A) / IM C6000 hardware configuration



RICOH IM C4500A/IM C4500/IM C5500A/IM C5500/IM C6000

MAIN SPECIFICATIONS

| | IM C4500A | IM C4500 | IM C5500A | IM C5500 | IM C6000 |
|--|---|--------------------|------------------------------|--------------------|--------------------|
| GENERAL | | | | | |
| Warm-up time | | | 21 seconds | | |
| First output speed: B/W | 3.6 seconds | 3.6 seconds | 2.9 seconds | 2.9 seconds | 2.9 seconds |
| First output speed: full colour | 5.4 seconds | 5.4 seconds | 4.2 seconds | 4.2 seconds | 4.2 seconds |
| Continuous output speed | 45 ppm | 45 ppm | 55 ppm | 55 ppm | 60 ppm |
| Memory: standard | | | 2 GB | | |
| Memory: maximum | | | 4 GB | | |
| HDD: standard | | | 320 GB | | |
| HDD: maximum | | | 320 GB | | |
| ARDF capacity | | | 100 sheets | | |
| SPDF capacity | | | 220 sheets | | |
| Weight | 101.4 kg | 96 kg | 101.4 kg | 96 kg | 101.4 kg |
| Dimensions: W x D x H | 587 x 685 x 963 mm | 587 x 685 x 913 mm | 587 x 685 x 963 mm | 587 x 685 x 913 mm | 587 x 685 x 963 mm |
| Power source | | | 220 - 240 V, 50/60 Hz | | |
| COPIER | | | | | |
| Multiple copying | | | Up to 999 copies | | |
| Resolution | 600 dpi | 600 dpi | 600 dpi | 600 dpi | 600 dpi |
| Zoom | | | From 25% to 400% in 1% steps | | |
| PRINTER | | | | | |
| CPU | ApolloLake E3940 1.6 GHz | | | | |
| Printer language: standard | PCL5c, PCL6, PostScript 3 (emulation), PDF direct (emulation) | | | | |
| Printer language: option | Genuine Adobe ®PostScript®3™, IPDS, PictBridge, PDF Direct from Adobe® | | | | |
| Print resolution: maximum | 1,200 x 1,200 dpi | | | | |
| Network interface: standard | Ethernet 10 base-T/100 base-TX/1000 base-T, USB Host I/F Type A, USB Device I/F Type B | | | | |
| Network interface: option | Bi-directional IEEE 1284/ECP, Wireless LAN (IEEE 802.11a/b/g/n), Additional NIC (2nd port) | | | | |
| Mobile printing capability | Apple AirPrint™, Mopria, Google Cloud Print, NFC, Ricoh Smart Device Connector | | | | |
| Windows® environments | Windows® 7, Windows® 8.1, Windows® 10, Windows® Server 2008, Windows® Server 2008R2, Windows® Server 2012R2, Windows® Server 2016 | | | | |
| Mac OS environments | Macintosh OS X Native v10.11 or later | | | | |
| UNIX environments | UNIX Sun® Solaris, HP-UX, SCO OpenServer, RedHat® Linux Enterprise, IBM® AIX | | | | |
| SAP® environments | SAP® R/3®, SAP® S/4® | | | | |
| Other supported environments | IBM iSeries | | | | |
| SCANNER | | | | | |
| Scanning speed: ARDF | 80 ipm (200/300 dpi) | | | | |
| Scanning speed: SPDF | 120 ipm (simplex)/240 ipm (duplex) | | | | |
| Resolution: maximum | 1,200 dpi | | | | |
| Compression method | TIFF (MH, MR, MMR, JBIG2), Grayscale | | | | |
| File formats | Single Page TIFF, Single page JPEG, Single page High compression PDF, Single page PDF/A, Multi page TIFF, Multi page PDF, Multi page High compression PDF, Multi page PDF/A | | | | |
| Scan modes | E-mail, Folder, USB, SD Card | | | | |
| FAX | | | | | |
| Circuit | | | PSTN, PBX | | |
| Transmission speed | | | 2 seconds | | |
| Modem speed: maximum | | | 33.6 Kbps | | |
| Resolution: standard | | | 8x3.85 line/mm, 200x100 dpi | | |
| Resolution: option | | | 16x15.4 line/mm, 400x400 dpi | | |
| Compression method | | | MH, MR, MMR, JBIG | | |
| Scanning speed | 81 spm | 68 spm | 81 spm | 68 spm | 81 spm |
| Memory: standard | | | 4 MB, (320 pages) | | |
| Memory: maximum | | | 60 MB, (4,800 pages) | | |
| PAPER HANDLING | | | | | |
| Recommended paper size | Standard paper tray(s): (SRA3, A3, A4, A5, A6, B4, B5, B6, Envelopes), Optional paper tray(s): (SRA3, A3, A4, A5, A6, B4, B5, B6, Envelopes), Bypass tray: (SRA3, A3, A4, A5, A6, B4, B5, B6, Envelopes, Custom Size paper) | | | | |
| Paper input: standard | 1,200 sheets | | | | |
| Paper input: maximum | 4,700 sheets | | | | |
| Paper output: standard | 500 sheets | | | | |
| Paper output: maximum | 3,625 sheets | | | | |
| Paper weight | Trays: (60 - 300 g/m²), Bypass: (52 - 300 g/m²), Duplex: (52 - 256 g/m²) | | | | |
| Paper types | Plain paper, Recycle paper, Special paper, Color paper, Letterhead, Cardstock, Preprinted paper, Bond paper, Coated paper, Envelope, Gloss paper, Label paper, OHP | | | | |
| ECOLOGY | | | | | |
| Power consumption: max. | | | Less than 1,850 W | | |
| Power consumption operation: B/W | 644.6 W | 644.6 W | 821.7 W | 821.7 W | 837.7 W |
| Power consumption operation: Full colour | 729.9 W | 729.9 W | 935.4 W | 935.4 W | 957 W |
| Power consumption: ready | | | 59 W | | |
| Power consumption: sleep | | | 0.62 W | | |
| TEC | 1.8 kWh | 1.8 kWh | 2.5 kWh | 2.5 kWh | 2.7 kWh |

RICOH IM C4500A/IM C4500/IM C5500A/IM C5500/IM C6000

MAIN SPECIFICATIONS

| | IM C4500A | IM C4500 | IM C5500A | IM C5500 | IM C6000 |
|--|---|----------|-----------|----------|----------|
| OUTPUT TRAYS AND FINISHER OPTIONS | | | | | |
| 2x 550-sheet paper tray | Paper size: (SRA3, A3, A4, A5, A6, B4, B5, B6), Paper weight: (60-300 g/m ²) | | | | |
| 1x 550-sheet paper tray | Paper size: (SRA3, A3, A4, A5, A6, B4, B5, B6), Paper weight: (60-300 g/m ²) | | | | |
| 2,000-sheet Large capacity tray | Paper size: (A4), Paper weight: (60-300 g/m ²) | | | | |
| 1,500-sheet side Large capacity tray | Paper size: (A4, B5), Paper weight: (60-300 g/m ²) | | | | |
| 1,000-sheet Hybrid finisher | Paper size: (SRA3, A3, A4, A5, A6, B4, B5, B6), Paper weight: (52-300 g/m ²), 1,000 sheets, Staple capacity: (50 sheets), Staple paper size: (A3, A4, A5, B4, B5), Staple paper weight: (52-105 g/m ²), Staple positions: (Top, Bottom, 2 Staples) | | | | |
| 3,000-sheet Finisher | Paper size: (SRA3, A3, A4, A5, A6, B4, B5, B6), Paper weight: (52-300 g/m ²), Stack capacity: (3,000 sheets), Staple capacity: (50 sheets), Staple paper size: (A3, A4, A5, B4, B5), Staple paper weight: (52-105 g/m ²), Staple positions: (Top, Bottom, 2 staples, Top-slant) | | | | |
| 1,000-sheet Booklet finisher | Paper size: (SRA3, A3, A4, A5, A6, B4, B5, B6), Paper weight: (52-300 g/m ²), Stack capacity: (1,000 sheets), Staple capacity: (50 sheets), Staple paper size: (A3, A4, A5, B4, B5), Staple paper weight: (52-105 g/m ²), Staple positions: (Top, Bottom, 2 staples, Booklet) | | | | |
| 2,000-sheet Booklet finisher | Paper size: (SRA3, A3, A4, A5, A6, B4, B5, B6), Paper weight: (52-300 g/m ²), Stack capacity: (2,000 sheets), Staple capacity: (50 sheets), Staple paper size: (A3, A4, A5, B4, B5), Staple paper weight: (52-105 g/m ²), Staple positions: (Top, Bottom, 2 staples, Booklet) | | | | |
| 500-sheet Internal finisher | Paper size: (A3, A4, A5, A6, B4, B5), Paper weight: (52-300 g/m ²), Stack capacity: (500 sheets), Staple capacity: (50 sheets), Staple paper size: (A4, A5, B4, B5), Staple paper weight: (52-105 g/m ²), Staple positions: (Top, Bottom, 2 staples) | | | | |
| Internal shift tray | Tray capacity: (250 sheets), Paper size: (SRA3, A3, A4, A5, A6, B4, B5, B6), Paper weight: (52-300 g/m ²) | | | | |
| One-bin tray | Tray capacity: (125 sheets), Paper size: (A3, A4, A5, B4), Paper weight: (52-300 g/m ²) | | | | |

OTHER OPTIONS

Fax unit, G3 Interface, Fax connection unit, Fax memory unit, Cabinet, Caster table, VM card, Memory unit, Side Tray, Banner paper guide tray, Punch units, Internal Multi-fold unit, IPDS unit, Camera direct print card, Genuine PostScript 3, IEEE 1284 I/F, IEEE 802.11 a/g/n I/F, Device server unit, File format converter, OCR unit, Enhanced security HDD, Data overwrite security unit, Small paper feeding unit, Page keeper, Imageable area extension unit, ADF handle, External keyboard bracket, Counter I/F unit, Key counter bracket, NFC card reader, Smart card reader built-in unit, EFI controller, EFI Impose, EFI Compose, EFI Hot folders, EFI Spot on

CONSUMABLES

| | |
|--------------------------------|---------------|
| Toner: black | 33,000 prints |
| Toner: cyan/magenta/yellow | 22,500 prints |
| Consumable yield based on 2ppj | |
| 6% coverage on A4 | |

*Airprint certification will be available in 2019.

